

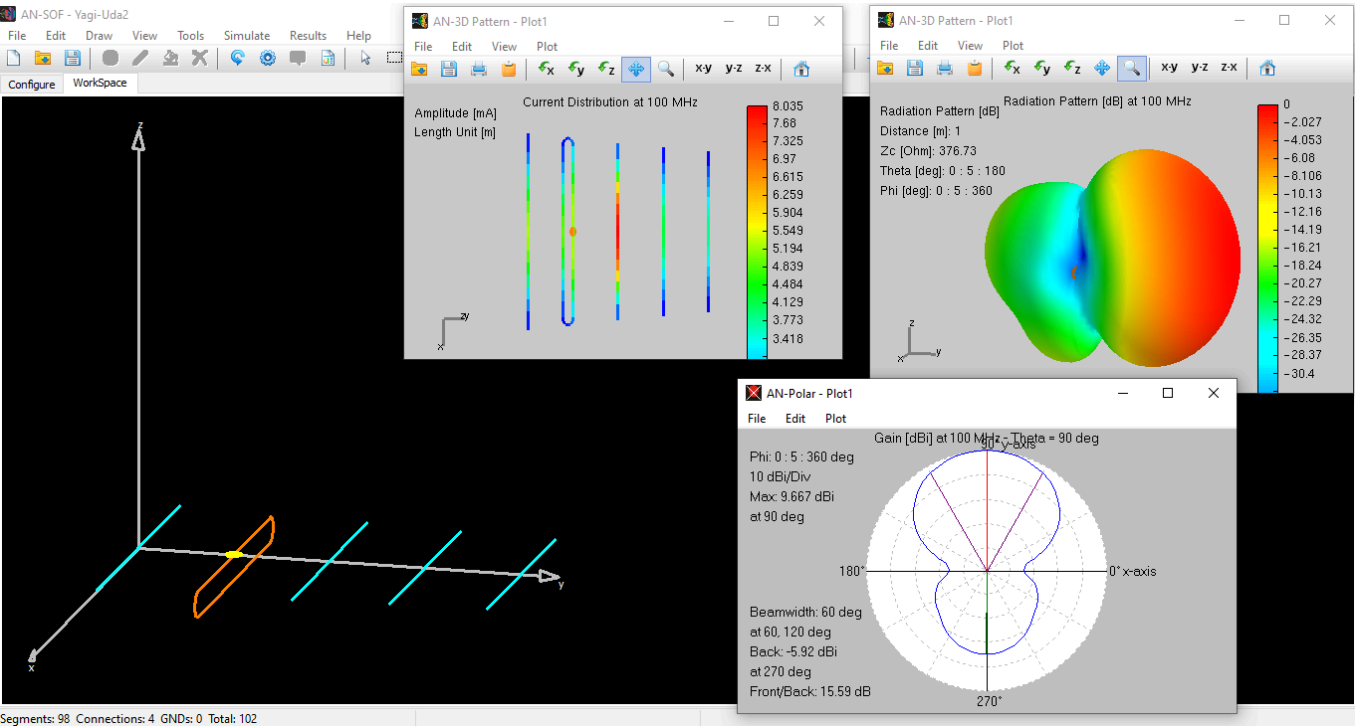
5-Element Yagi-Uda

Share this Article



Simulation of a Yagi antenna that consists of five linear wires. The driven element is a folded dipole which does not change the radiation pattern shape, but it changes the input impedance for an easier impedance matching.

A directional radiation pattern is obtained as can be expected. The current distribution on the array can be plotted as a color map to compare the current intensities between the elements of the array.



Download Model

Share this Article

